

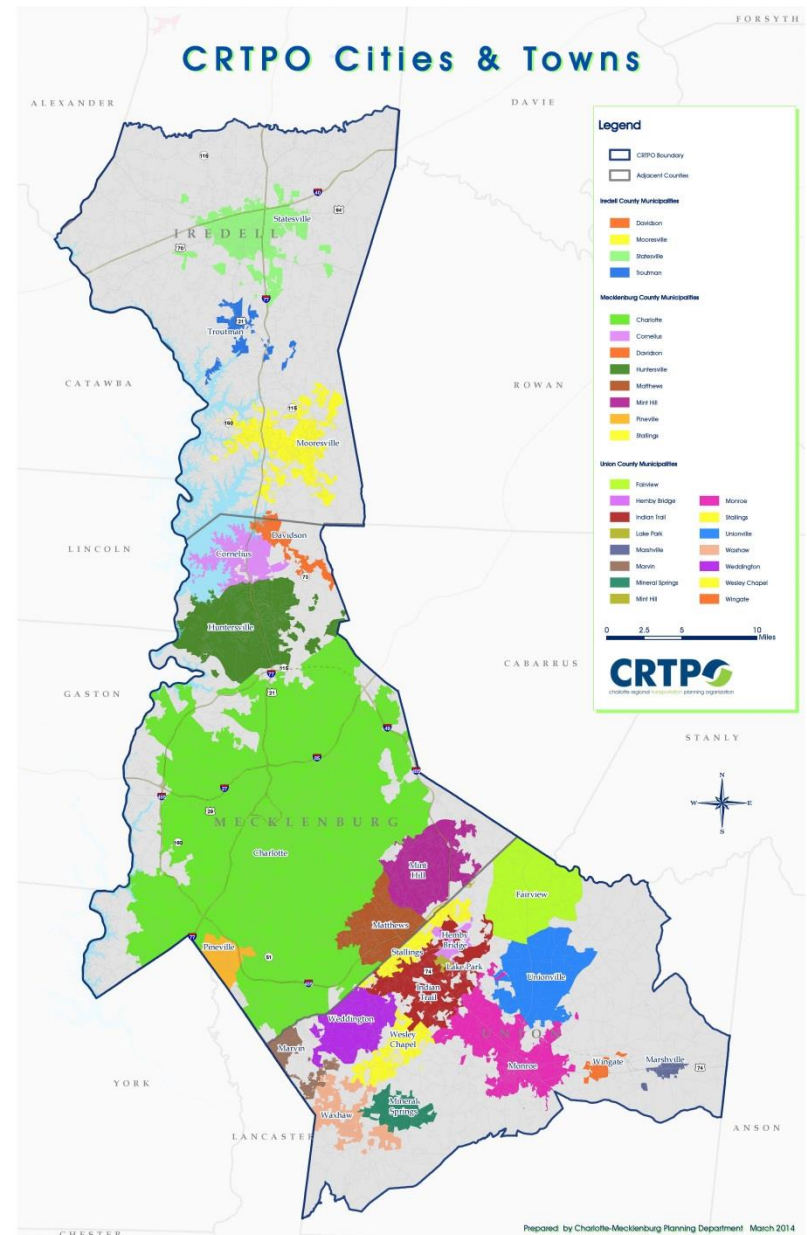


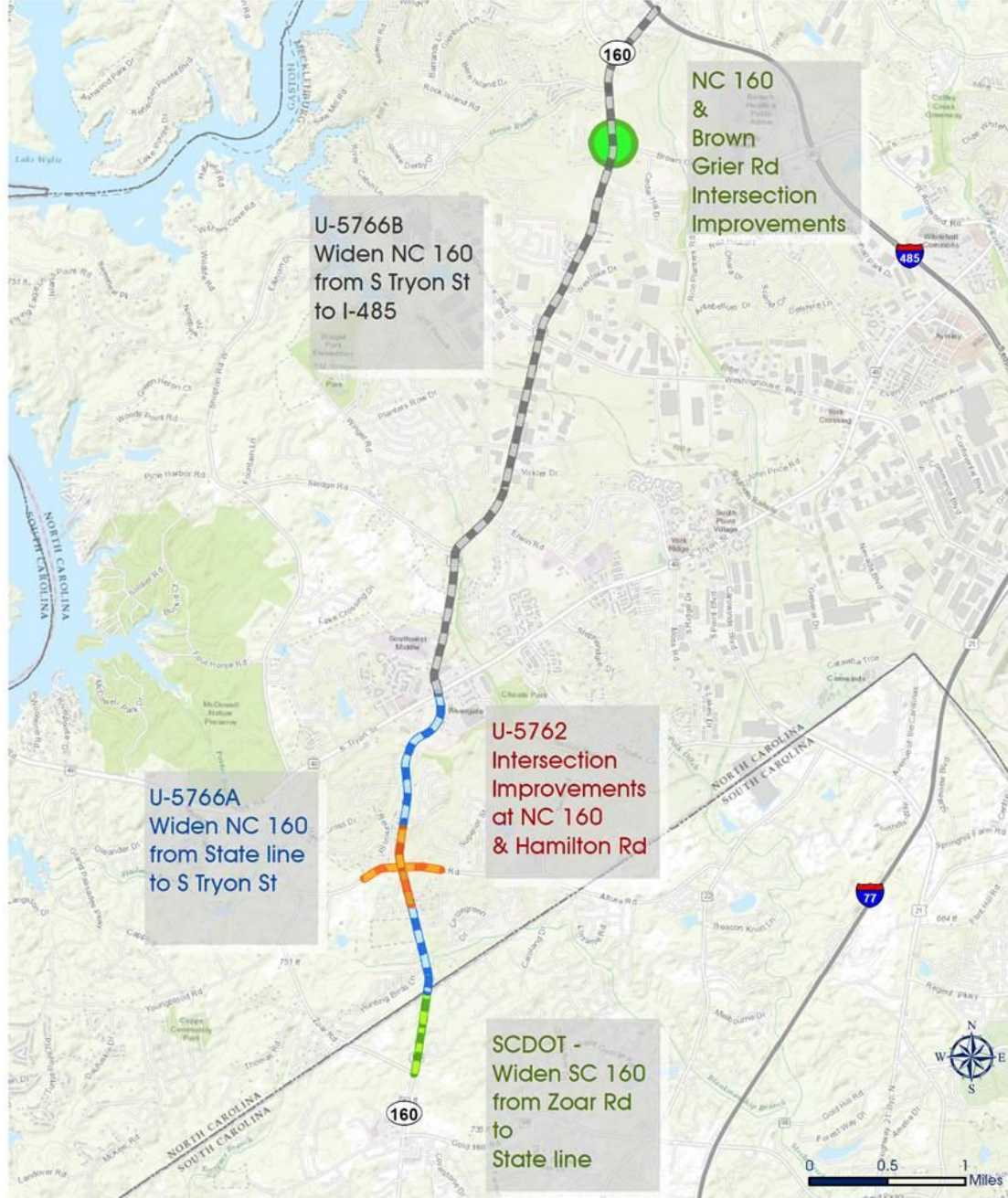
# **CRTPO Update**

## **NC 160 Improvements**

Steele Creek Residents Association  
February 23, 2017

- Federally-designated metropolitan planning organization (MPO) for Charlotte urbanized area
- Responsible for transportation planning in Mecklenburg, Union and Iredell counties
- Core responsibility: allocation of federal transportation funds
- Primary tasks
  - Metropolitan Transportation Plan
  - Transportation Improvement Program





# Steele Creek Area - NC 160 TIP Projects



**CRTPO**  
Metropolitan  
Transportation  
Plan

TRANSPORTATION FOR OUR  
*GROWING TOMORROW*

**LEARN MORE!**

### OVERVIEW



The **Metropolitan Transportation Plan** defines the policies, programs and projects to be implemented over the next 25 years in order to reduce congestion, improve safety, support land use plans, and provide mobility choices in the CRTPO planning area. It also addresses the goals and objectives of the CRTPO, the various components of the transportation planning process, socio-economic and financial assumptions, and transportation-related environmental and health issues.

As the designated regional transportation planning entity for all of Iredell and Mecklenburg counties, and the western and central, urbanized portions of Union County, the CRTPO is responsible for the long range transportation planning efforts for the region. The CRTPO, in partnership with the federal, state, and local agencies, works collaboratively to address the transportation needs of the region.

**WE NEED YOUR INPUT**

**GET INVOLVED**

The MTP planning process kicks off in early 2017, and we want you to be a part of it!

### Upcoming Events:

JANUARY

12

Webinar

12:30 p.m.

**www.2045mt  
p.org**



**#2045MTP**  
**#CRTPOGrowingTomor  
row**

Robert W. Cook, AICP

[rwcook@charlottenc.gov](mailto:rwcook@charlottenc.gov)

704-336-3917

[www.crtpo.org](http://www.crtpo.org)