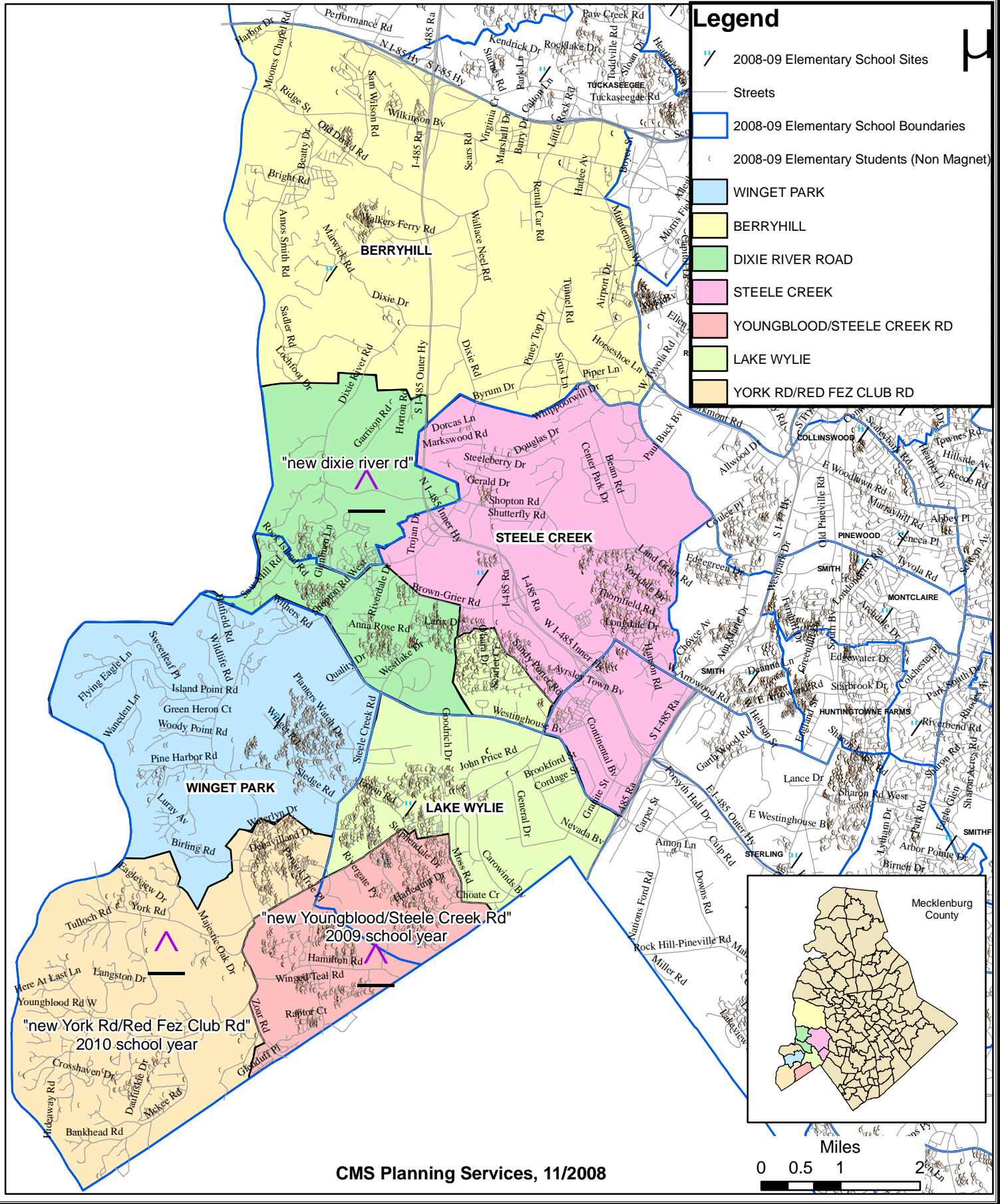


BOARD ADOPTED: 2009-10

"new Dixie River Road", "new Youngblood/Steele Creek Rd" and "new York Road/Red Fez Club Rd" elementary schools



**BOARD ADOPTED: "new Dixie River Road", "new Youngblood/Steele Creek Rd"
and "new York Rd/Red Fez Club Rd" elementary schools
2009-10 School Year**

CMS Enrollment, 2008-09

Elementary Schools	2008/09 ADM 20th Day	Building Classroom Capacity	Utilization without mobiles	Number of Mobiles	Number of EC Classes	White	African American	Latino	Asian	Native American	Multi Racial	Free or Reduced Price Lunch
Berryhill	405	300	135%	0	0	27%	17%	39%	8%	1%	8%	78%
Lake Wylie	966	693	139%	19	2	40%	29%	19%	5%	1%	6%	39%
Steele Creek	1212	588	206%	35	0	14%	41%	32%	9%	0%	4%	61%
Winget Park	1188	767	155%	19	2	44%	28%	16%	6%	0%	6%	34%

*enrollment includes transfer and choiced-in students as of 20th day 2008-09

ADM= Average Daily Membership

*Percents are rounded to the nearest whole number

CMS Students (non magnet) Within Boundary After Proposed "dixie river road" boundary option

Elementary Schools	Number of Students residing in the Proposed 2009-10 School Boundary as of 20th day 2008-09	2009-10				2010-11			
		Number of Students from Growth (2009-10 SY)	Total Students with Growth	Building Classroom Capacity	Utilization (without Mobiles)	Number of Students from Growth (2010-11 SY)	Total Students with Growth	Building Classroom Capacity	Utilization (without Mobiles)
"new dixie river rd"	475	62	537	618	87%	62	599	618	97%
Berryhill	316	16	332	300	111%	16	348	300	116%
Lake Wylie	717	40	757	693	109%	40	797	693	115%
Steele Creek	743	8	751	588	128%	8	759	588	129%
Winget Park 2009-10	908	186	1094	767	143%	61	574	767	75%
"new youngblood"	705	50	755	767	98%	50	805	767	105%
"new york road"	462	131	593	767	77%	131	724	767	94%

*Assumption: the rate of growth will remain constant from 2008-09 to 2009-10.

*Number of students in the proposed boundary options do not include transfer or choiced-in students

2009-10 Demographic/student data as of 20th day 2008-09

Elementary Schools	Number of Students in the Proposed 2009-10 School Boundary as of 20th day 2008-09	White	African American	Hispanic	Asian	Native American	Multi Racial	Free or Reduced Price Lunch
"new dixie river rd"	537	16%	43%	26%	9%	0%	6%	60%
Lake Wylie	757	33%	30%	22%	8%	1%	6%	47%
Berryhill	332	23%	13%	47%	8%	2%	7%	87%
Steele Creek	751	14%	43%	31%	7%	0%	4%	63%
"new youngblood"	755	42%	27%	18%	4%	1%	8%	35%
"new york road"	593	45%	26%	18%	5%	0%	6%	36%
Winget Park 2009-10	1094	46%	25%	17%	6%	0%	6%	33%

*Demographic data is based on students residing in the proposed boundary options and does not include transfer or choiced-in students

Winget Park 2010-11	574	46%	24%	16%	8%	0%	6%	30%
---------------------	-----	-----	-----	-----	----	----	----	-----