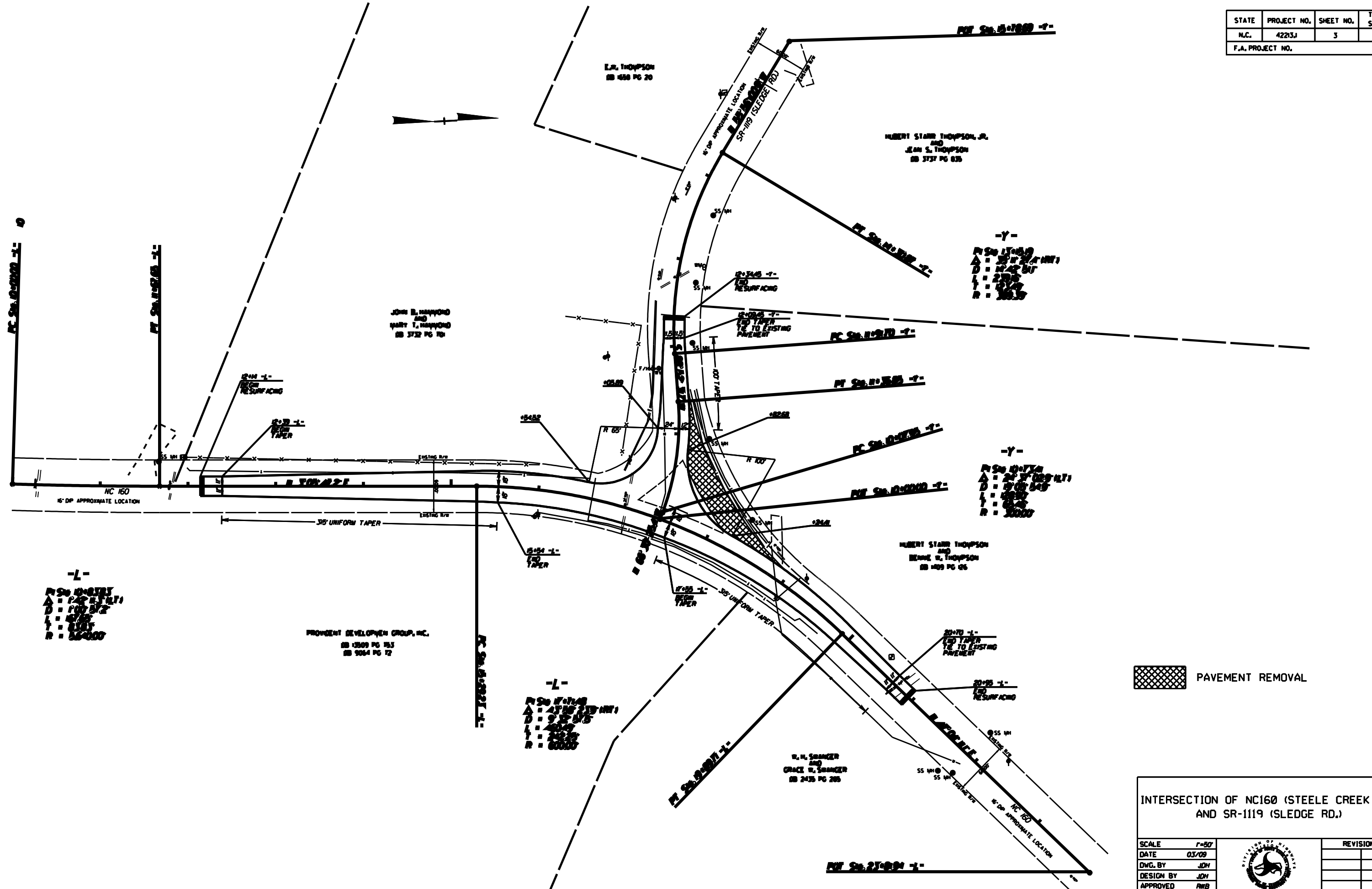


STATE	PROJECT NO.	SHEET NO.	TOTAL SHEETS
N.C.	42213J	3	
F.A. PROJECT NO.			



-Y-  
 P.S. 1119  
 A = 24' 0" (1:1)  
 D = 10' 0" (1:1)  
 L = 20' 0"  
 T = 10' 0"  
 R = 3000'

-Y-  
 P.S. 1119  
 A = 24' 0" (1:1)  
 D = 10' 0" (1:1)  
 L = 20' 0"  
 T = 10' 0"  
 R = 3000'


-L-  
 P.S. 1119  
 A = 24' 0" (1:1)  
 D = 10' 0" (1:1)  
 L = 20' 0"  
 T = 10' 0"  
 R = 3000'

-L-  
 P.S. 1119  
 A = 24' 0" (1:1)  
 D = 10' 0" (1:1)  
 L = 20' 0"  
 T = 10' 0"  
 R = 3000'

 PAVEMENT REMOVAL

INTERSECTION OF NC160 (STEELE CREEK RD.) AND SR-1119 (SLEDGE RD.)

SCALE	1"=50'
DATE	03/09
DWG. BY	JDH
DESIGN BY	JDH
APPROVED	RWB



REVISIONS